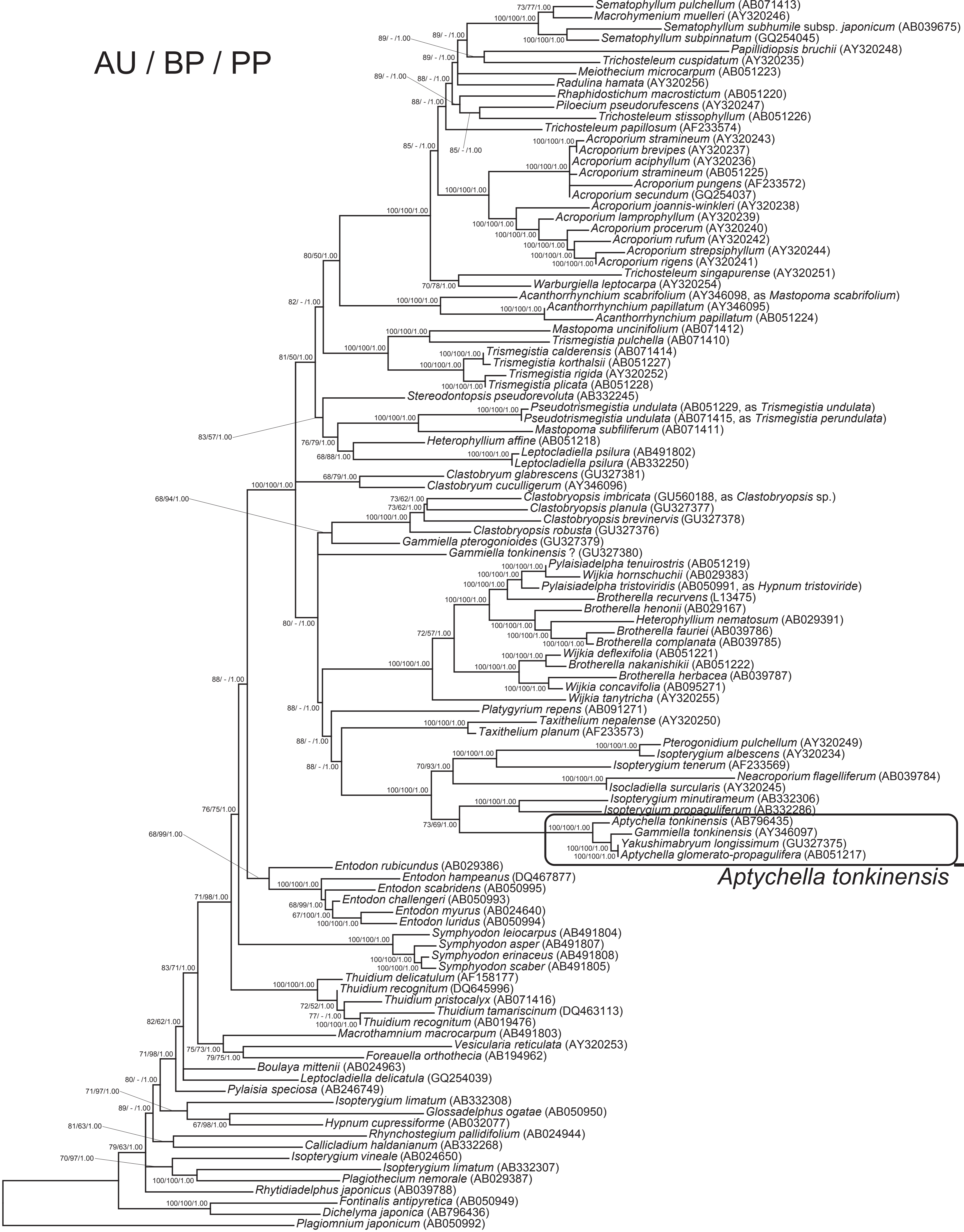


AU / BP / PP

Sematophyllaceae (s. l.)



*Aptychella tonkinensis*

0.01

Appendix B. Phylogenetic tree based on analysis of the chloroplast *rbcL* gene sequences, depicted by the ML tree with the best ranking log-likelihood value. Supporting values more than 50% obtained by the program CONSEL were overlaid: the values by the AU test (AU), bootstrap probabilities (BP), and Bayesian posterior probabilities (PP) are shown on or near each branch (AU/BP/PP; in %). The root is arbitrarily placed on the branch leading to *Plagiomnium japonicum* following Tsubota et al. (2001b) and Akiyama & Tsubota (2009).